



JUNIOR COLLEGE NIGHT
BEGINNING THE COLLEGE
ADMISSION PROCESS

Presented by Student Personnel Services Office

Junior Parent Night Agenda

- Overview of college admissions process
- Resources
- SAT, SAT Subject Tests, & ACT
- Naviance
- Spring/Summer suggestions
- Questions and comments

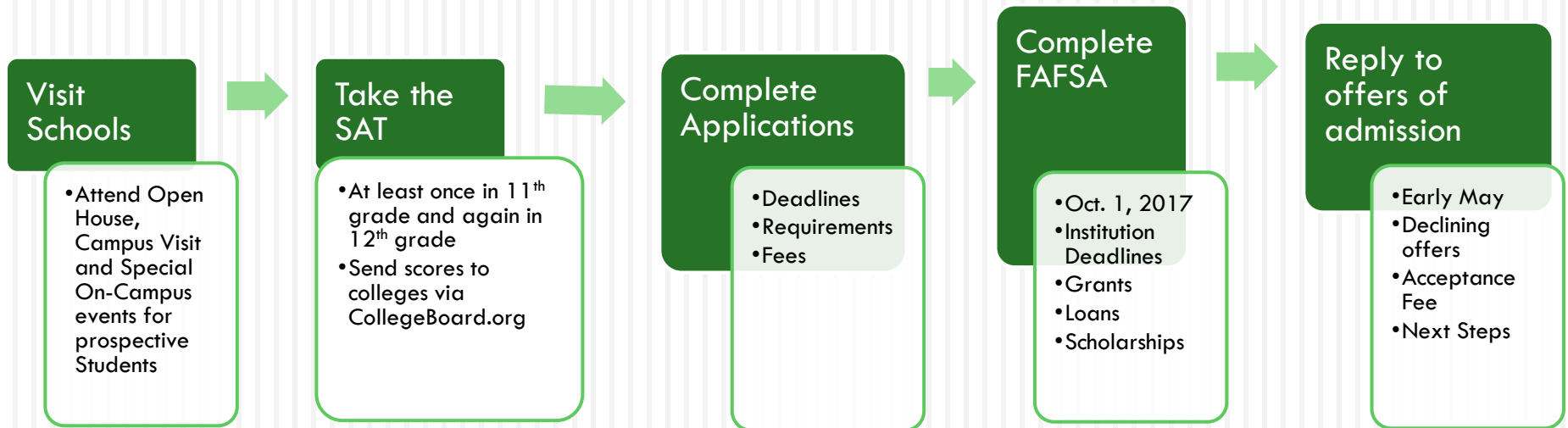
Post-Graduation Plans

Many options to consider...

- ❑ 4-year college/university
- ❑ 2-year college
- ❑ Trade/technical school
- ❑ Military
- ❑ Employment



4-year College – Admission Steps



Resources for choosing the college that is the best fit for YOU...

- [Naviance](#): a web-based college and career guidance program
- [CollegeBoard.org](#): “Big Future” college search feature
- College rep visits to the SPS office in the fall
- Attend campus tours and open houses
- Recommendations from AHS grads, teachers, friends, relatives, etc.
- Attend College Fairs -3/14 @ CCC 6:00-8:00

Naviance

All students are issued a Naviance account with access to many great features such as...

- College search & compare
- Reserve a seat for upcoming college rep visits
- Request transcripts, track your applications, check on date sent, due dates, etc.
- Game plan
- Scholarship list & links
- Career interest inventory

College Search – Factors to Consider

- Academic Majors
- Selectivity
- Location/Distance from home
- Size
- Diversity
- Housing
- Athletics/Activities
- Cost
- Scholarship Eligibility (check college websites, [NJ STARS](#))
- Public/Private
- Admission Requirements
- Fit

College Search (4,667 schools available) a SuperMat

MY SEARCH OPTIONS Start Over Save My Searches

FIND & PIN A SCHOOL BY NAME Enter name of school

- FIND YOUR BEST FIT
- Location
 - Majors
 - My Scores
 - Tuition and Fees
 - Ethnicity
 - School Type
 - School Size
 - On Campus Housing
 - Campus Setting
 - Public or Private
 - Gender Mix
 - Historically Black



GET MATCHED
 Use over 20 search criteria to find the schools that are the best match for you and find out why.

PIN YOUR FAVORITE
 Keep an eye on the schools you're interested in by pinning them to the top of your list.

COMPARE
 See how your pinned schools stack up to each other on the factors that matter to you most with SuperMatch's Compare View.



Find Colleges, Advice and More [Search] Sign up | Sign in

Get Started | Find Colleges | Explore Careers | Pay for College | Get In | Make a Plan

Home / Find Colleges / College Search

ShareThis

College Search

Save Selections | Clear All Selections

- SELECT FILTERS
- Type of School
- Location
- Campus & Housing
- Majors & Learning Environment
- Sports & Activities
- Applying
- Academic Credit
- Paying
- Support Services
- Diversity

You have 3,978 college options. Choose a category on the left to find the right ones for you. We'll help along the way.

Not sure where to start? Go to **College Search Step-by-Step**, an interactive guide.

Campus Visit

- Attend an Open House *and* a weekday tour (if possible)
- Talk to current students other than the tour guides
- Ask questions
- Ask yourself- Is this school the right **FIT** for me?

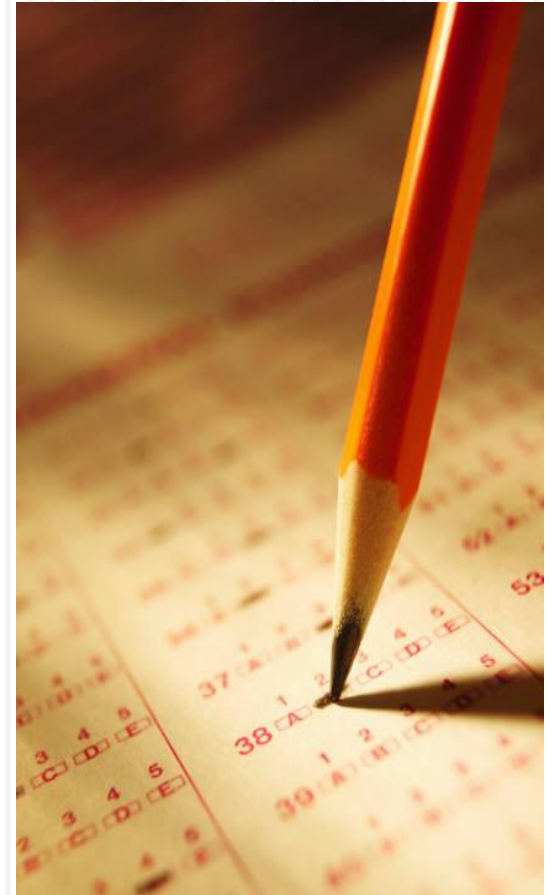


What Factors do Colleges Consider?

- ❑ Strong high school grades/GPA/Class rank
- ❑ Competitive SAT scores
- ❑ Challenging academic coursework/strength of curriculum
- ❑ Activities, athletics, community service
- ❑ Well-written essay
- ❑ Quality letters of recommendation (if required)
- ❑ Leadership (e.g. team captain, club president, etc.)
- ❑ A well-rounded student

Taking the SAT and the ACT

- The best time to take the SAT or ACT is during the spring of your junior year. Many students also decide to take the SAT or ACT again in the fall of their senior year.
- **Register at collegboard.org or act.org**
- SAT Registration Fee: \$46(no essay), \$60.00 (with essay)
- ACT Registration Fee: \$46 (no essay) \$62.50 (with essay)
- Students on free or reduced lunch are eligible for an SAT and ACT fee waivers (up to 2 for each)
- Be sure to take advantage of the 4 free score reports during registration; after SAT registration, there is an \$12.00 fee for each score report requested. Additional score reports are \$13 for the ACT.



SAT vs. ACT

SAT: Evidence based Reading & Writing, and Math

- ❑ SAT: Total score 1600
- ❑ No penalty for guessing; earn points for correct responses
- ❑ www.collegeboard.org

SAT Subject Tests

- ❑ Specific one hour content area tests used by a small percentage of colleges. Be sure to confirm if the colleges to which you are applying require these tests and plan accordingly. (Some examples: Bryn Mawr, Columbia, Duke, NYU, Princeton, U Penn, etc.)

ACT: English, Reading, Math, Writing, and Science(basic content, reasoning, analysis, evaluation, and interpretation)

- ❑ ACT: Total score 1-36
- ❑ No penalty for wrong answer
- ❑ www.act.org

Spring/Summer Checklist

- ❑ Research potential colleges/schools/majors
- ❑ Check out college websites & admission requirements
- ❑ Visit college campuses
- ❑ Narrow down list to 5-6 schools
- ❑ Complete “Colleges I’m Applying To” in Naviance
- ❑ Organize your materials – create a schedule to complete all applications
- ❑ Register for SAT and SAT Subject Tests (if required)
- ❑ Request letters of recommendation by the fall
- ❑ Work on a resume in Naviance of athletics/activities, community service, honors/awards, employment, etc.
- ❑ Take a challenging senior year schedule

QUESTIONS???

Please feel free to contact your student's counselor...

Last names A- F

Ms. Emily Warren

ewarren@audubonschools.org

Last names G- M

Mrs. Wendy VanFossen

wvanfossen@audubonschools.org

Last names N- Z

Mr. Mike Tomasetti

mtomasetti@audubonschools.org